



# User Manual

## Infrared Massage Belt 2024

Infinite pleasure

Belt



Control



Host



The belt gives you two options: you can either use the built-in host on the belt or just the remote control, depending on your needs



# How to wear it



**01**

**Place the belt arround the waist or abdomen**



**SIZE – 107,5cm x18,5**



# How to wear it

02

Secure the waistband





03

After wearing it install the host. Press the button to turn on the Host.







1. Display 6 Modes Intensity

2. Lock Screen Indication

3. Strength +

4. Strength -

5. Switch the red light gear on/off keyposition

6. Power/Mode toggle Key



6. Red Light Gear Indication

7. Lock Screen Indication

8. 6 Modes Intensity Digital Display

9. Massage Status Indication

10. Red Light Status Indication

# HOST Operating instructions

01

Fix the host in the correct direction on the waistband.

02

Tie and buckle the infrared red light belt to the position where massage is needed at the waist, ensuring a tight fit.

03

Press and hold the ON/OFF button for 3 seconds to turn on the device, and the normal indicator light will light up. Press and hold the ON/OFF button for 3 seconds to turn off the device, and all indicator lights will turn off. After turning on the machine, briefly press the ON/OFF button to turn on and off the lock screen.

When the lock screen is turned on, the lock screen indicator icon will light up in white, and when turned off, the lock screen indicator icon will turn off. The lock screen will emit a "beep" sound when opened and closed.





04

Press the +/- keys to adjust the massage intensity, with a total of 1 to 19 intensities. Press + to increase the massage intensity, and press - to decrease the massage intensity. Massage intensity from 0 to 1 will produce a "drip" sound. When the massage is activated and the intensity reaches 19th gear, touching the + button will emit a "drip" sound, indicating the highest intensity.

05

Press the M mode Alt key to convert the mode from 1 mode to 6 mode, and each mode displays the mode indicator with different colors.

Green corresponds to mode 1, white corresponds to mode 2, cyan corresponds to mode 3, red corresponds to mode 4, blue corresponds to mode 5, and yellow corresponds to mode 6.

The charging display is red, and the LED is off when fully charged. The mode transition will emit a "beep" sound.





06

Press the switch the red light gear on key, and briefly press the red light function to switch from low, medium, high, and then to off gear. Each gear displays a different color gear indicator light.

Green represents the low range of red light, yellow represents the middle range of red light, and red represents the high range of red light. The indicator light will flash when the red light works normally when the belt is tied.

Indicates that the red light is running. If the belt does not come into contact with the host magnetic buckle, activating the red light switch gear button will emit a "Didi Di" prompt sound, and the indicator light will remain on, indicating that the belt is not in contact with the host magnetic buckle.

10



# Remote Control Operating Instructions

—

01

Press the +/- keys to adjust the massage intensity, with a total of 1 to 19 intensities. Press + to increase the massage intensity, and press - to decrease the massage intensity

Long press and hold for 3 seconds to activate the remote control lock screen function, and the lock screen icon indicator light will light up. Long press and hold for 3 seconds to turn off the lock screen, and the lock screen icon indicator light will turn off.

02

Press the switch to switch the red light gear on key, briefly press the red light function to switch from low, medium, high, and then to off gear. Each gear corresponds to a different color of gear indicator light.

03



03

Press and hold the power on/off button for 3 seconds to turn on the device. The normal indicator light will light up, and then press and hold the ON/OFF button for 3 seconds to turn off the device. All indicator lights will turn off. After turning on the machine, press the ON/OFF key briefly to switch between mode 1 and mode 6.

04

Each mode corresponds to a different colored mode indicator light. The color corresponding to remote control mode is the same as that corresponding to host mode.

—

## Matters Needing Attention

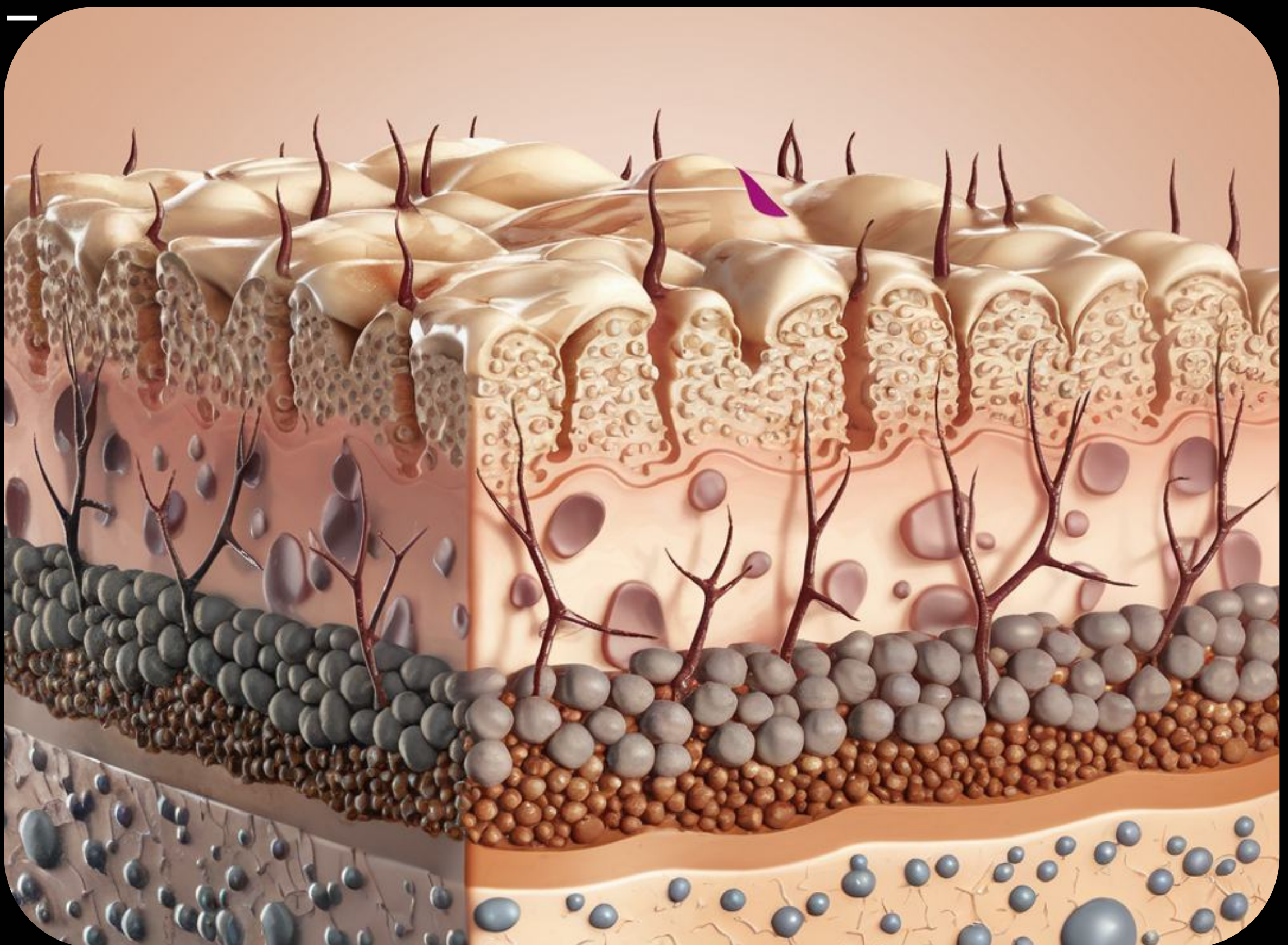
- If you want to obtain other therapeutic effects, please consult the relevant doctor before use
- Do not use it when sleeping, driving or bathing
- Do not let the product touch jewelry metal objects
- Do not use under the following circumstances:
  - Any discomfort
  - Arrhythmia or heart problems
  - Epilepsy patients
  - Pregnant women
  - Cancer patients

03



# Near Infrared Light Physiotherapy

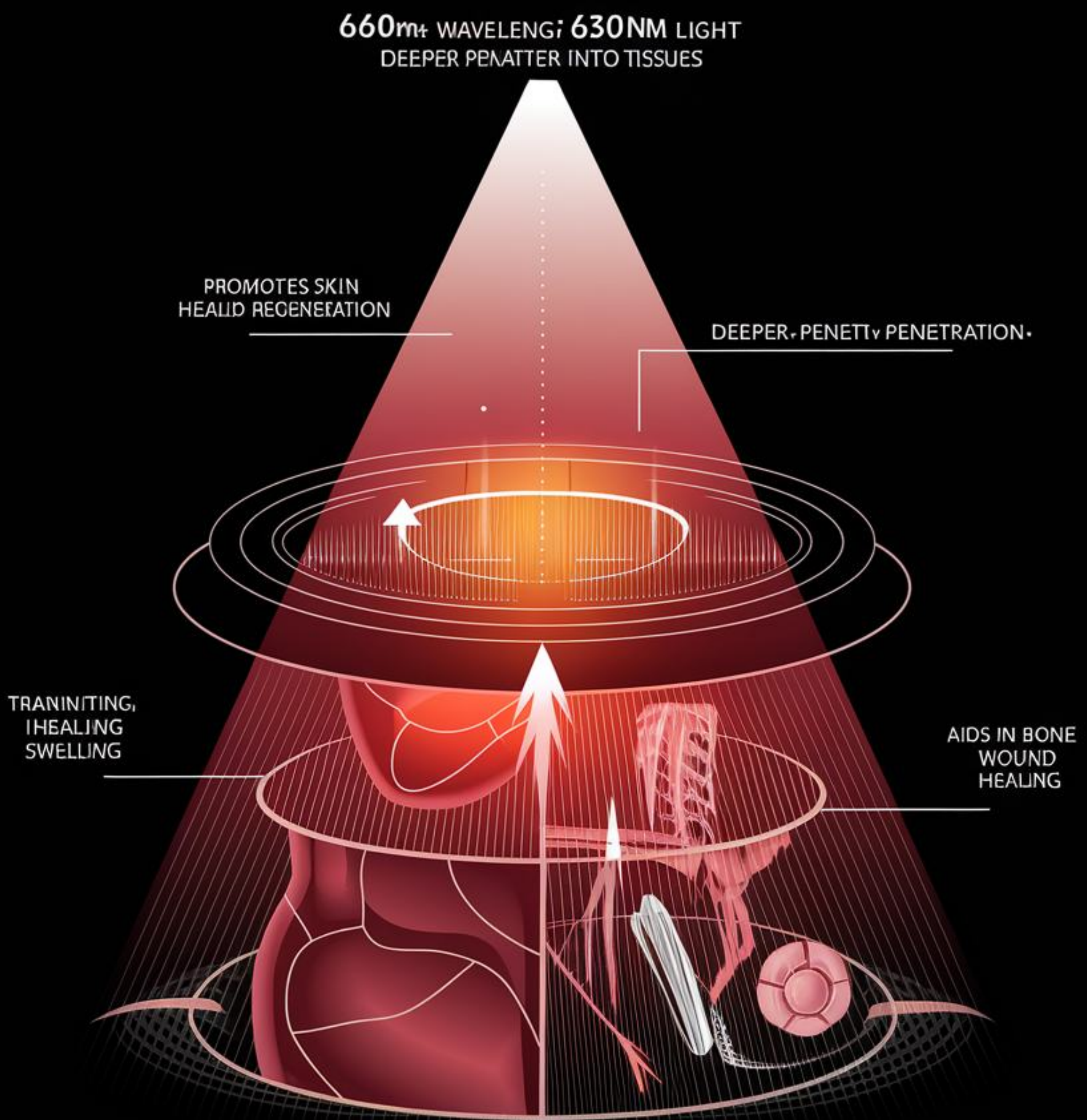
With the human body wavelength, and heat with strong penetration into the joint, continuous physiotherapy accelerates blood circulation, eases joint discomfort.



## 630nm Wavelength

- Primarily addresses skin problems.
- Penetrates skin cells and sebaceous glands.
- Restores skin texture smoothness and uneven pigmentation.

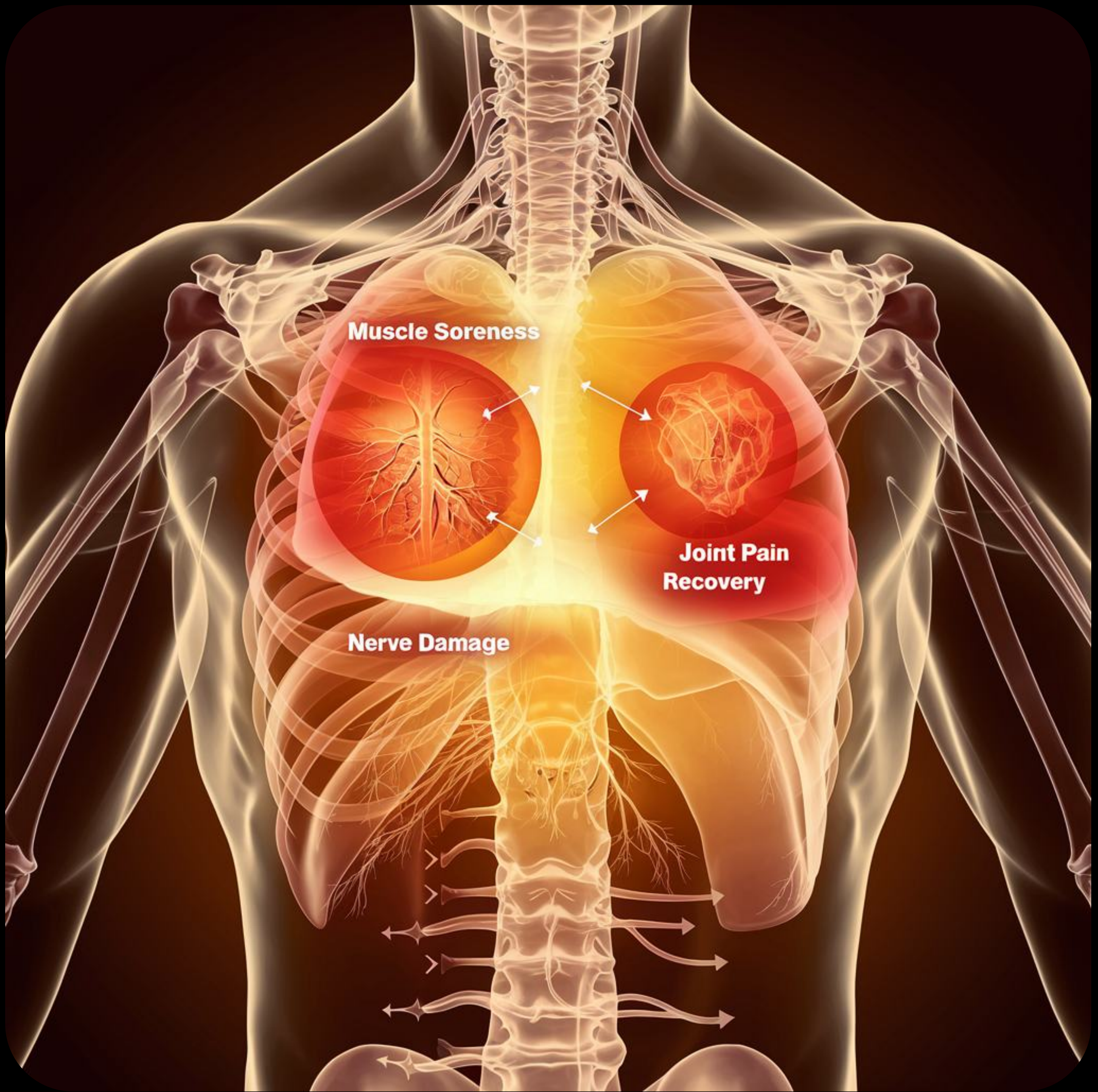




## 660nm Wavelength

- Penetrates deeper than 630nm.
- Promotes healing and regeneration of skin.
- Reduces training fatigue, inflammation, and swelling.
- Aids in bone healing and wound healing.





## 850nm Wavelength

- Penetrates deepest, into muscle and bone.
- Helps with muscle soreness, nerve damage, and joint pain recovery.
- Aids in healing deeper wounds.





[support@infpleasure.com](mailto:support@infpleasure.com)